

Furniture needs

1. Furniture should be designed on the basis of component units, i.e. cupboard units, drawer units, etc - Tables need not be units

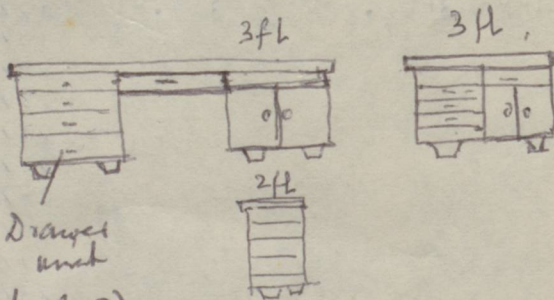
2. The following units may be necessary:

I. Drawer unit (DU)

II. Cupboard-unit (CU)

III. Combination DU/CU

IV. Open-bench Drawer unit (OP)



- The units can be assembled in any combination and table tops can be laid over them.

- The depth of the units will be 2 ft (or $1\frac{1}{2}$ ft?).

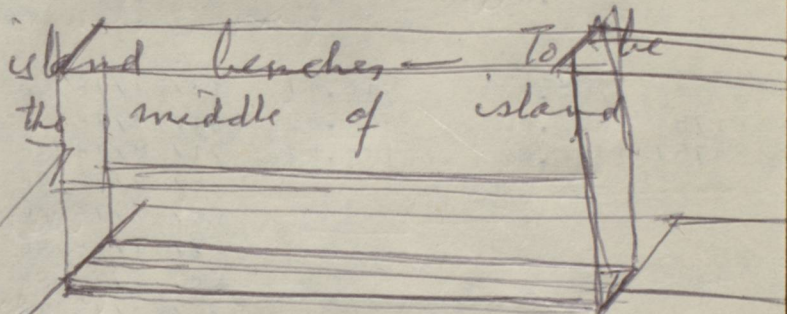
The depth of table tops will be $2\frac{1}{2}$ ft (or tops in 2 ft 8" or 3 ft can be easily made)

The bench unit can be made in two heights ~~2~~ $\frac{B}{2}$ ft ^(36") for island assemblies and 30" for low bench unit.

Thus six types of bench unit I, II and III in high and low will be needed. (The widths can be 2th and 3th)

Other items which be standardized are?

V. Shelves for island benches - To be placed in the middle of island bench.



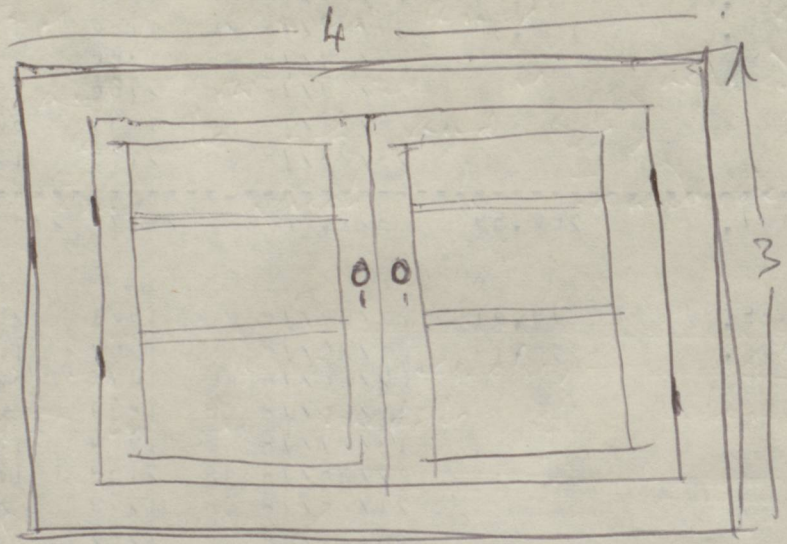
Work out the best way of running service lines and placing taps on the benches.

$$8+8 = 16''$$

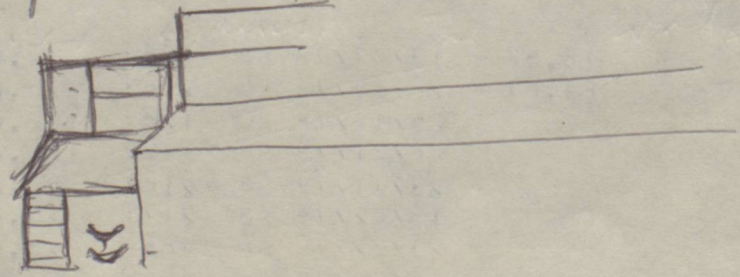
VI. Ledges to be placed on tables against the walls



VII Wall cupboards — Lockable
 glass-window door — Adjustable
 shelves : 4 ft x 3 ft x 10"



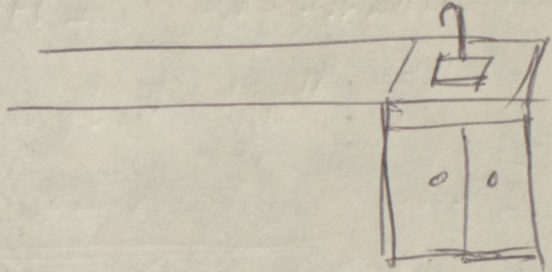
VIII Students sitting tables — along
 benches with bookshelves &
 pin board



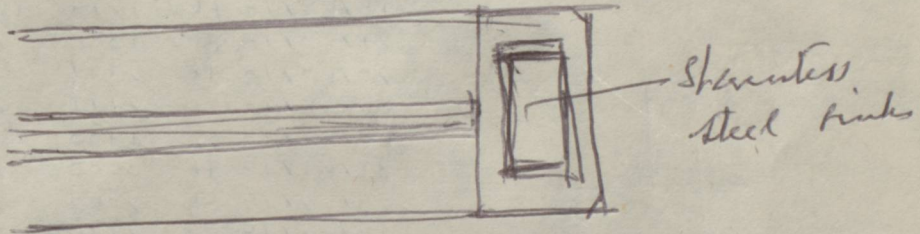
IX

Sink units

Small for low
bays



Large for island
units



X

Fume hoods

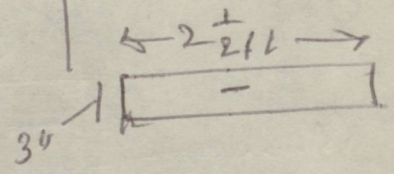
✓

LIST OF units

Bench units

- I Drawer unit (DU)
- II Cupboard unit (CU)
- III Combination unit (DU/CU)
- IV Open bench drawers
- V Reagent shelves for island benches
- VI Ledges for table
- VII Wall cupboards
- VIII Students tables
- IX Sinks Small
- X Sinks Large
- XI Fume Hoods

High 3 ft
Low 30"



width 16"
Provide for services

4 ft x 3 ft
?

